



UNIVERSITAS GADJAH MADA
FAKULTAS GEOGRAFI
DEPARTEMEN GEOGRAFI PEMBANGUNAN

Surani Hasanati, S.Si., M.Sc.

Dosen Prodi Pembangunan Wilayah, Fakultas Geografi, UGM

Associate Professor Faculty of Geography, Universitas Gadjah Mada

Researcher Gender and Development, FG, UGM

Coordinator SDG's Forum-SDGs Seminar Series, FG UGM

Expert Board of Regional SDGs of Yogyakarta Special Province

**Secretariat Indonesian Forum of Higher Education Leader in
Geography and Geography Education**

Advisory Board of Indonesian Women in River Network

Former Director of Indonesian Women in River Network

**Former Head of Community Services, Clinic for Environment and
Disaster Mitigation, Universitas Gadjah Mada**



Email: surani.hasanati@ugm.ac.id

WA Phone: +62 857 271727 95



INDONESIAN WOMEN IN RIVER NETWORK: *A GOOD PRACTICE FOR IMPLEMENTING GENDER AND ENVIRONMENTAL MANAGEMENT IN INDONESIA*

Locally Rooted, Globally Respected

www.pw.geo.ugm.ac.id

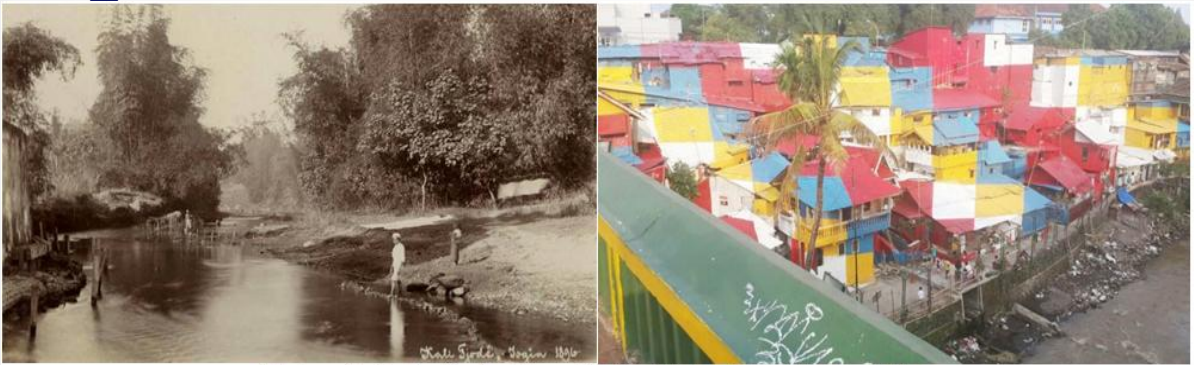


OUTLINE

- A. SRIKANDI SUNGAI INDONESIA/
INDONESIAN WOMEN IN RIVER NETWORK**
- B. IMPLEMENTING LEARNING**
- C. WHAT NEXT**



Indonesian River Restorationn Movement



Picture1. Left: Code River 1896. Right: Code River 2015

Locally Rooted, Globally Respected

www.pw.geo.ugm.ac.id

A. SRIKANDI SUNGAI INDONESIA/ INDONESIAN WOMEN IN RIVER NETWORK



THREE ENDS PROGRAM
FROM MINISTRY OF
WE&CP RI

- End Violence Against Women and Children*
- End Human Trafficking*
- End Barriers To Economic Justice*

WORLD WIDE NETWORKING



ISU TERKINI di INDONESIA

Bonus Demografi → **Resiko Perempuan**
Bonus Demografi → **Resiko Lingkungan**


CREaM ↔ **Pendekatan Gender**


↓

Promote:






1. Educating and Empowering Women-Children
2. Conserving Environment and
3. Increasing Economy Creativity

Locally Rooted, Globally Respected www.pw.geo.ugm.ac.id

 **Srikandi Sungai Indonesia**
369 subscribers SUBSCRIBE

HOME **VIDEOS** PLAYLISTS CHANNELS ABOUT 

Uploads PLAY ALL ≡ SORT BY

			
SSI Introduction 66 views · 1 month ago	Study Goes To River - SRIKANDI SUNGAI... 185 views · 1 month ago	"WOMEN in RIVER (Indonesian Women in River... 228 views · 1 month ago CC	Peresmian Sekolah Sungai SSI.KLATEN - Srikandi Sung... 135 views · 1 month ago CC
			
Kunjungan Menteri KPPA -			

- <https://www.youtube.com/channel/UCjX7vGx843DaYSct6UyWocA/videos>



Programs for Women in River School -Experience-

Based on **Yogyakarta Action Plan – RCE Yogyakarta**

Goal

Establishment and enhancement of community-capacity and resilience in adapting/solving/tackling problems and challenges

Objectives

To empower youth and women, and through them to empower the community to solve their problems and improve their resilience

To build capacity and character of school students to enhance the knowledge and engage them for local initiatives to protect the environment for sustainability



B. IMPLEMENTING LEARNING

1. integrating esd in policies, strategies, and programe
2. Embedded ESD in curricula and book
3. integrating esd in teacher education/TOT
4. delivering esd in the classroom and other learning settings
5. Integrating appropriate technology and information-communication development
6. integrating ESD with other stakeholders

No-one left behind!

integrating ESD with policies strategy and program

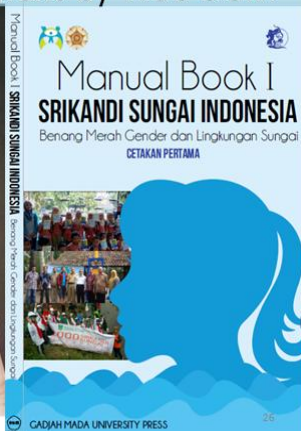


Locally R

Picture3. Pentahelix networking: Indonesian River Restoration Movement with Yogyakarta King as Yogyakarta Special Region Governor, Sri Sultan HB X (centre)

2. Embedded ESD in curricula and book

Women leadership education for River Sustainable Development by WSC UGM



Mahasiswa
praktek

Edukasi
(ESD)

Mesin

Hilirisasi
(TTG)

Networking

Gerakan
(Sekolah SSI)

Locally Rooted, Globally Respected

www.pw.geo.ugm.ac.id



3. integrating esd in teacher education/TOT



Locally Rooted, Globally Respected

www.pw.geo.ugm.ac.id

4. delivering esd in the classroom and other learning settings



Departemen Geografi Pembangunan
Universitas Gadjah Mada

UNDANGAN SDGs FORUM
Sustainable Development Geography Seminar Series #16

Rural Women Empowerment
(Memperingati Hari Kartini dan Bumi & Lingkungan)

(Pre-RRPG Conference Series #4)

Moderator:

Pembicara :



Dr. Estuning Tyas Wulan Mei, M.Si.
Kepala Laboratorium
Kewilayahan DCP



Dr. Tri Winarni SP, SU
Kepala Pusat Studi Wanita
Universitas Gadjah Mada



Sri Susilowati, S.Hut, M.Si
Ketua Srikandi Sungai
Klaten

www.pw.geo.ugm.ac.id

Locally Rooted, Globally Respected

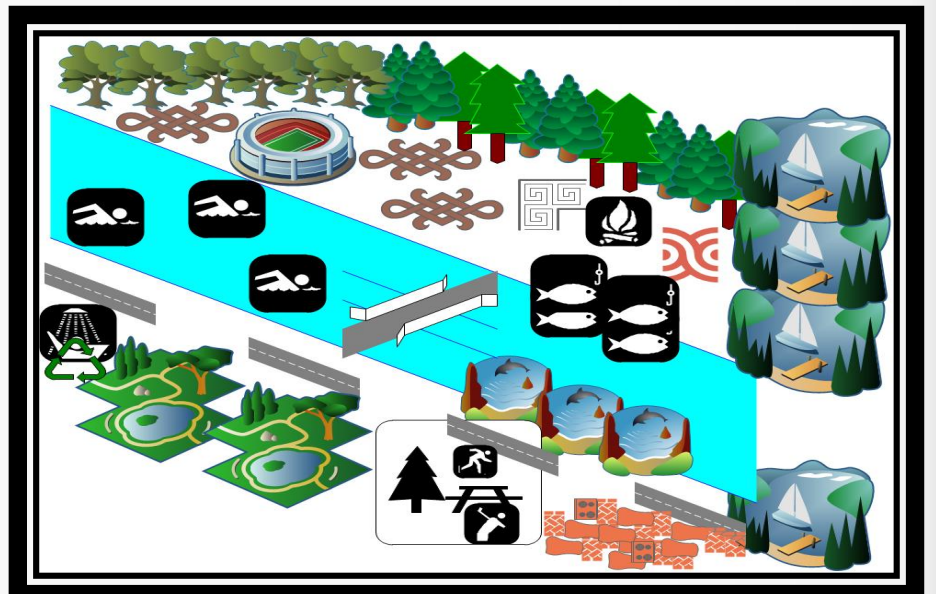


5. Integrating appropriate technology and information-communication development



6. integrating ESD with other stakeholders

**Wardo
EcoRiver
Park (WERP),
Biak, Papua**





WHAT NEXT?

www.pw.geo.ugm.ac.id



THE NEEDS FOR YOUTH (CHILDREN) AND WOMEN EMPOWERMENT

Understanding Gender and Environment by:
ITC

Cross-cultural knowledge adoption

Adapting to cultural differences by leadership

Cultural differences in the global workplace: work ethics, work styles, customs

Work relationships

Working with people who are 'different' from you

How similar tasks differ from nation to nation

Diversity and communication in small groups

Diverse project teams



Locally Rooted, Globally Respected

www.pw.geo.ugm.ac.id



Leave no one
behind for
sustainable river
development!

Healthy river
environment
starts from
healthy mother
and children!

Locally Rooted, Globally Respected

www.pw.geo.ugm.ac.id



THANK YOU MATUR NUWUN



DpKM



RCE Yogyakarta



Women Studies
Centre



Regional Laboratory
Faculty of Geography

**STUDENT
GOES TO RIVER**

Supported by:



Ministry of Female
Empowerment and
Child Protection



www.pw.geo.ugm.ac.id